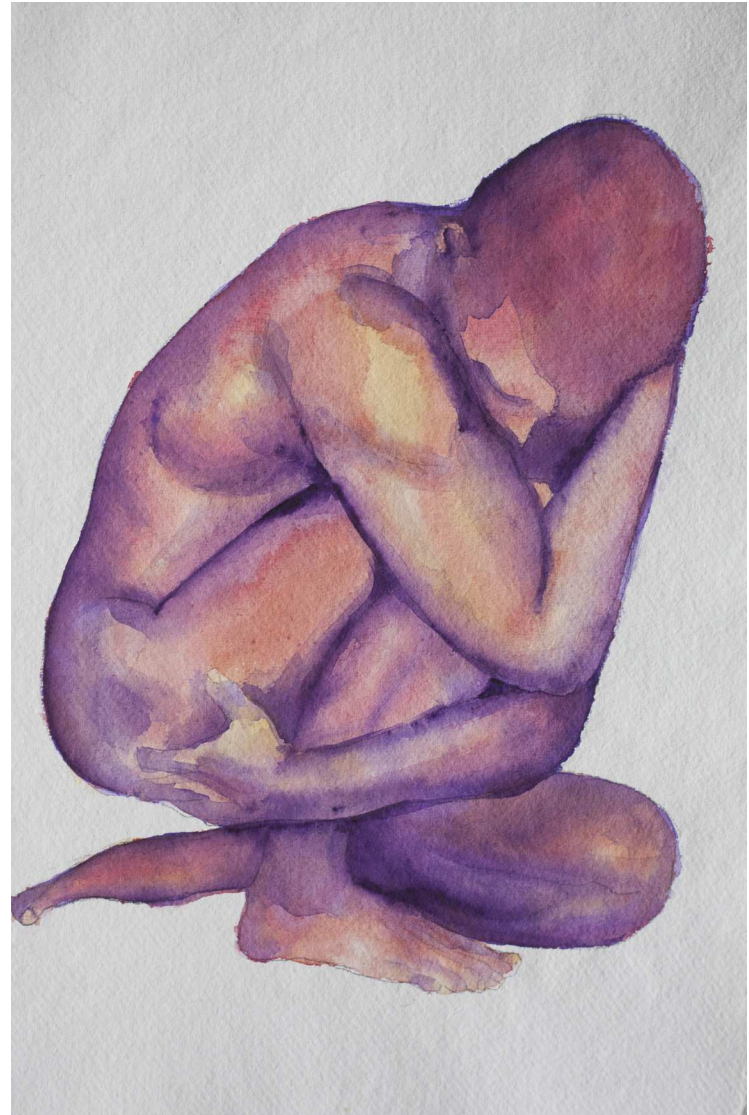
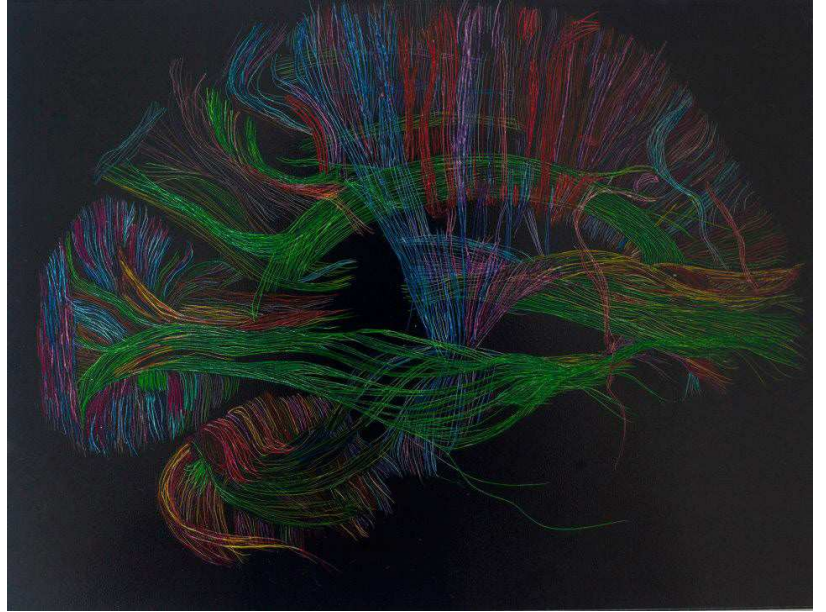
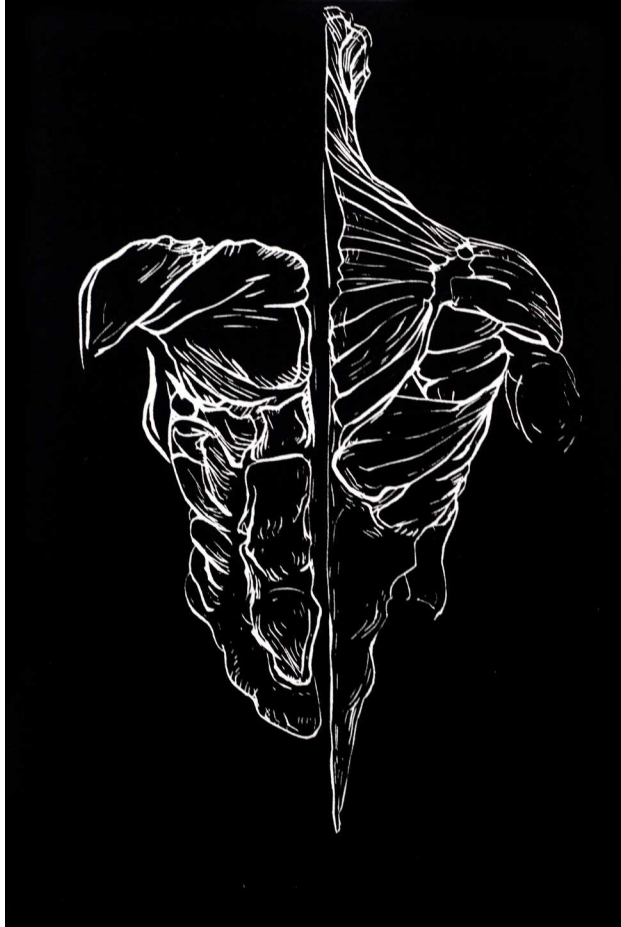


Penelope Lawry
Comfort and Hope

My artwork is inspired by nature. Where earlier works investigated the human cell and biology, the focus of my work has evolved, venturing into the outside natural world bringing a diversity of subject matter and opportunities. My art is interpretive, exploring nature's patterns and diversity using a variety of media and techniques.

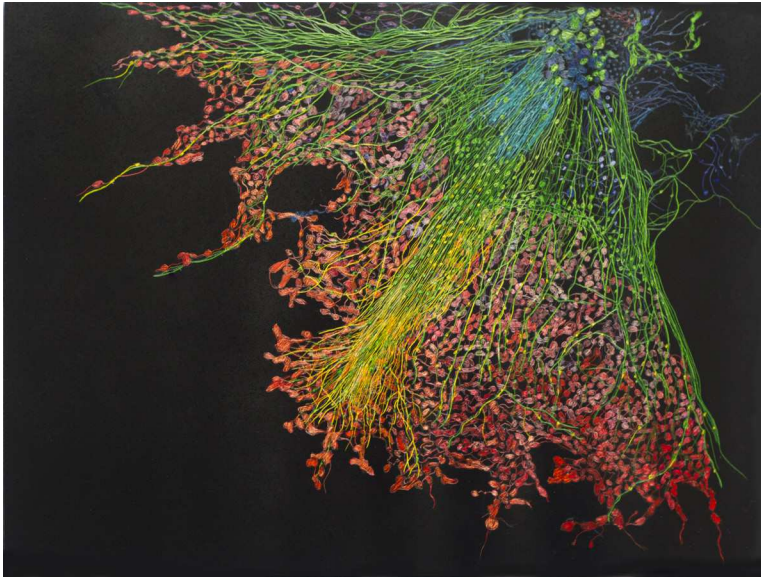
Posed, Watercolour on paper 28x42cm



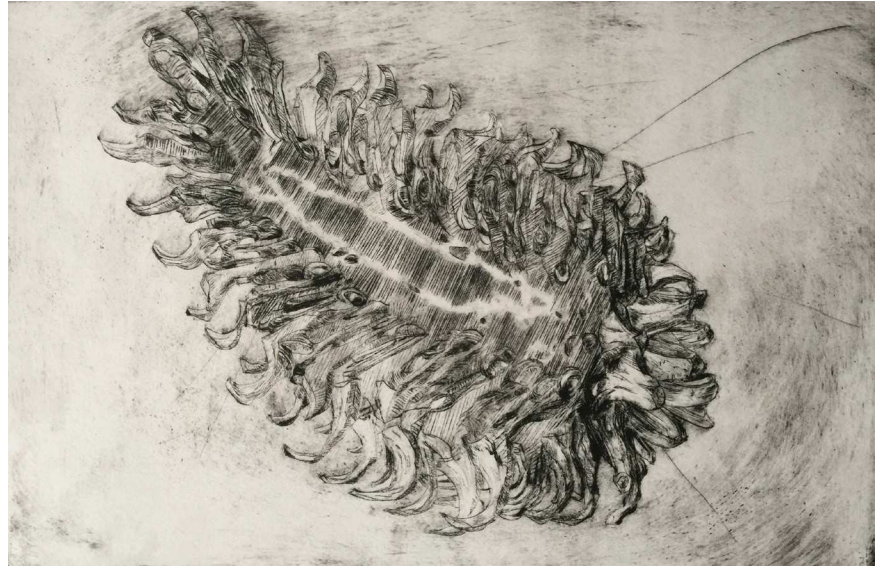


Cingulum Lines, Watercolour and ink on clayboard 31x23cm

Muscle Torso, Linocut on paper 20x29cm



Stem Cell Embroid, Watercolour and ink on clayboard 31x23cm



Pine Cone, Drypoint on paper 20x29cm



Dune Leaves, Hand coloured linocut on paper 19x42cm



Spoonbill Heaven, Hand coloured linocut on paper 30x42cm



Diggers Headland, Hand coloured linocut on paper 30x42cm